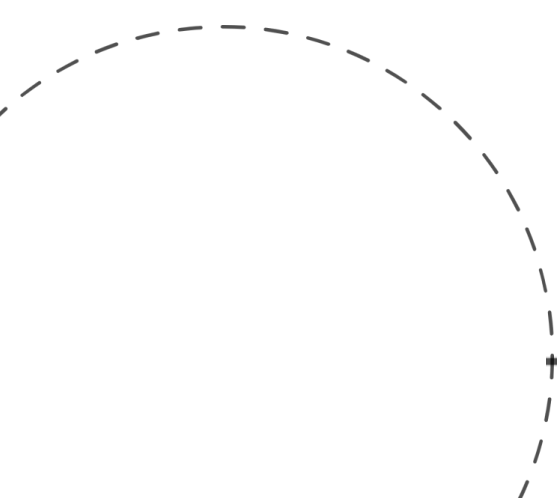




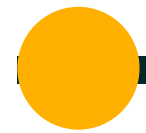
**ST MARY'S UNIVERSITY**

**IACUC**

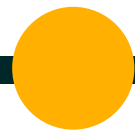


# IACUC

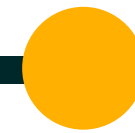
## Overview



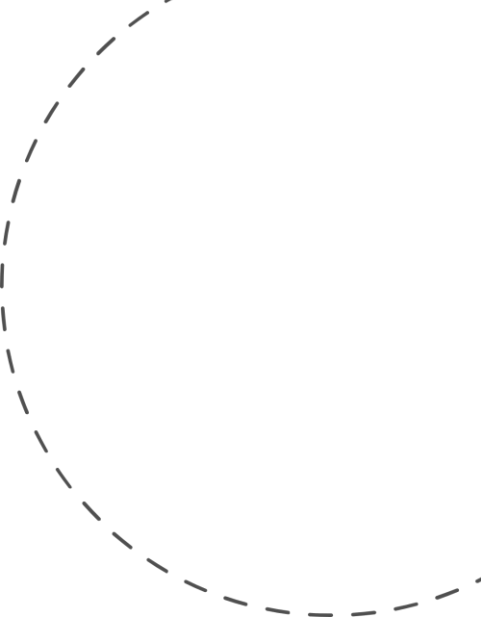
***History and  
Regulatory  
Agencies***



***Process***



***Contact Info***



# Animal Rules & Regulations

---

## **Animal Welfare Act**

---

1966 - Defines minimum standards of care and use of animals in research and the need for oversight through the IACUC.

## **PHS**

---

Public Health Service - enforced by OLAW and covers all vertebrate animals

## **IACUC**

---

Institutional Animal Care and Use Committee - provided protocol review and monitoring of animal care and use program at the institution

## **AAALAC**

---

Association for Assessment and Accreditation of Laboratory Animal Care, International



# USDA



## Animal Welfare Act (AWA)

Governs the use in research of all warm-blooded vertebrates (live or dead) with a few exceptions

## Animals Excluded from AWA Regulations

Birds, Rats and mice used in research, horses not used in research, invertebrates such as *Drosophila* and *C. elegans*, All fish, reptiles and amphibians and other farm animals

# Public Health Service (PHS)

## 01 OLAW

Policy is enforced by Office of Laboratory Animal Welfare (OLAW) at the NIH

## 02 Covers

All Vertebrate Animals

## 03 PHS Policy

Includes the Following Guidelines

- Guide for the Care and Use of Laboratory Animals
- US Government Principles for the Utilization and Care of Vertebrate Animals
- Animal Welfare Regulations
- AVMA Guidelines for the Euthanasia of Animals

# AAALAC

Association for the Assessment and Accreditation of Laboratory Animal Care-International

- **Private, nonprofit organization**
- **Promotes the humane treatment of animals in science**
- **Voluntary**
- **Demonstrates Institution's Commitment to the highest standards**
- **Guide for the care and use of laboratory animals (The Guide)**

**USDA**

**IACUC**

**PHS**

**AAALAC**

# OLAW

- Division within the Public Health Service that oversees animal research use.
- Oversight for implementation of PHS policy
- Grant agencies require PHS Assurance before funding grants
- Requires IACUC and covers all vertebrates





# IACUC's Role

## Institutional Animal Care and Use Committee

- Ensure that animals are used in research only when it is absolutely necessary
- Ensure the when animals are used in research that they are humanely treated

**animal  
research is  
a privilege**



# IACUC Committee

[https://grants.nih.gov/grants/olaw/references/PHS\\_PolicyLabAnimals.pdf](https://grants.nih.gov/grants/olaw/references/PHS_PolicyLabAnimals.pdf)

- Veterinarian**
- Scientist**
- Nonscientist**
- Community Member**

# IACUC's Activities

## Institutional Animal Care and Use Committee

- Reviewing and approving animal use protocols submitted by investigators
- Monitoring the animal care and use program by conducting thorough reviews of the program.
- Inspect animal facilities every 6 months.
- Review any concerns about the care and use of animals at the institution.
- Suspend any animal work if it is not being conducted in compliance with regulations or consistent with conditions of approval.
- Prepare reports of IACUC evaluations and submit to IO (Institutional Official), including minor or significant deficiencies and plan for correction
- Make recommendations to the IO regarding any aspect of the animal program, facilities or personnel

training

# IACUC Inspections

- **Animal Health Records and/or monitoring tags**
- **Drug logs – analgesia, anesthesia and euthenasia**
- **Animal Care**
- **Health and Safety**
- **Surgery**
- **Protocol Adherence**
- **Personnel Training**



# St Mary's IACUC Committee

- **Currently 7 members**
- **Oversees animal research on campus and research protocols involving animals observed outside of campus**
- **Meets Semiannually to discuss protocols, non-compliance issues and other topics as needed**



# The 3 R's

## **Reduction**

The Right Number of Animals

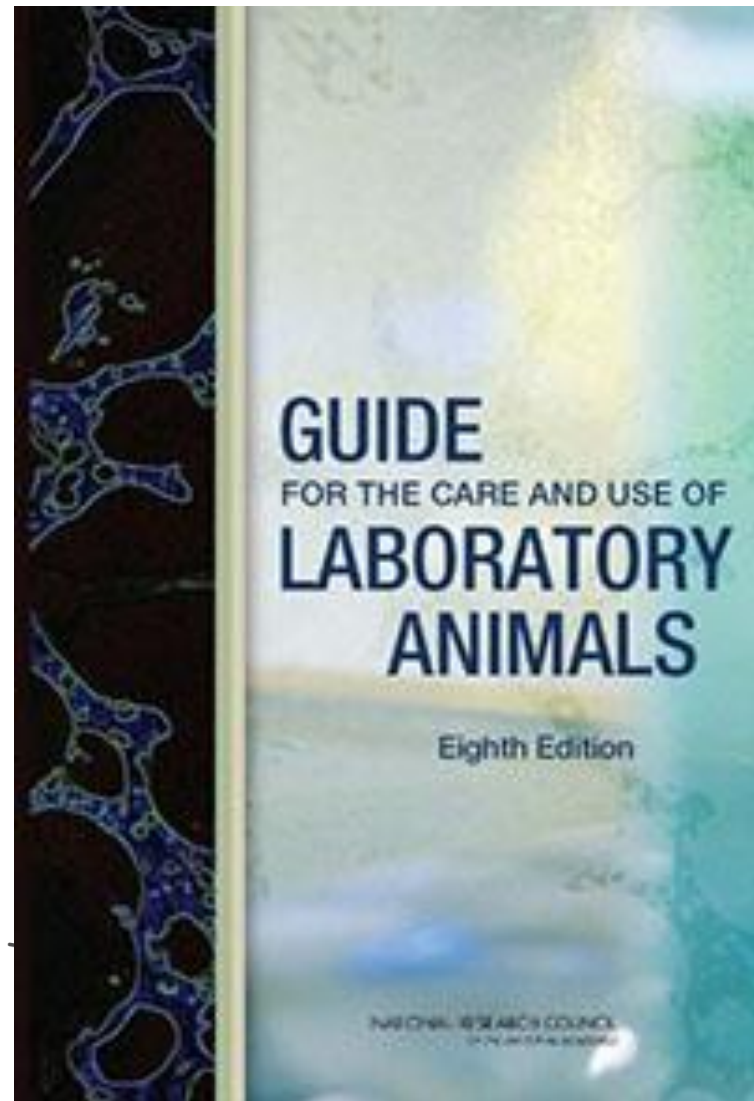
## **Refinement**

Methods which alleviate pain and enhance well-being

## **Replacement**

Use of a Non-Animal Model

# THE GUIDE



- **Animal Care and Use Program**
- **Environment, Housing, Management**
- **Veterinary Care**
- **Physical Plant**

<https://grants.nih.gov/grants/olaw/guide-for-the-care-and-use-of-laboratory-animals.pdf>

# Protocol Requirements

- **Protocol should provide detailed description of the proposed use for laboratory animals.**
- **Refer to the Guide for best practices for your species.**
- **Your protocol will be reviewed by scientists and non-scientists. The protocol must be clear and easy to understand. If technical terms and procedures are used, explain them well.**
- **Include the following**
  - **rational and purpose**
  - **description of procedures**
  - **Justification of species used and number of animals involved**
  - **Housing requirements**
  - **Training and expertise of personnel involved**
  - **Impact of your research on the animal's well-being**
  - **Method of euthanasia**



# Protocol Requirements

- **Field Studies**
  - **Studies with the potential to impact the health or safety of personnel or the animal's environment, even if purely observational or behavioral need to be approved by IACUC review**



# IACUC Review Process

## **Full Committee Review**

Review at convened meeting, all members review protocol and discuss

## **Designated Review**

Reviewed outside of convened meetings, expedited review.  
Proposals that are renewals, relatively straightforward

# Contact Us

- **Terry Shackelford, IACUC Chair**
  - **tshackelford@stmarytx.edu**
  - **210-431-8005**

- **IACUC General Email**
  - **IACUC@stmarytx.edu**

- **IACUC Protocol Form**
  - **SPARC Website on Gateway**

- **Post-Award Forms**

<https://gateway.stmarytx.edu/group/mycampus/services/sparc>

