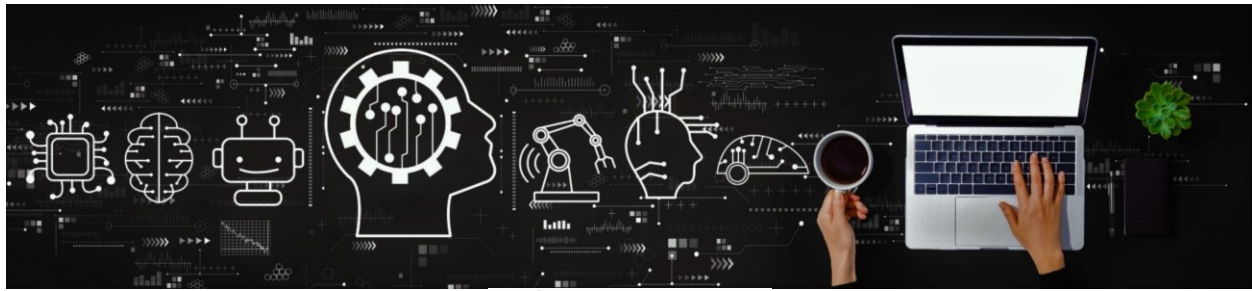



**Prepared by the PI: Dr. Emamian**

[vemamian@stmarytx.edu](mailto:vemamian@stmarytx.edu)

## **User Agreements and Responsibilities:**

1. Please do NOT share the username and password provided by the PI with anyone including other students or your research advisor.
2. Make reasonable effort to ensure that the software you install does not cause any security issue for the platform.
3. Be accountable for the safely use of the platform.
4. Please acknowledge use of this platform in any publications and reports resulting from conducting research on this platform.
5. The resources (the type and number of servers that will be made available) will be granted based on the estimated requirements of processing power and the research project in coordination with the resulting impact on overall resource availability.
6. Seek permission from the PI in advance for installing any additional software NOT mentioned in the Access Request Form.
7. Access the platform with the account (username and password created by the PI) only with proper authentication. Attempts to circumvent proper authentication by sharing username or passwords is strictly prohibited. Attempting to intentionally discover or modify other users' passwords is strictly and explicitly prohibited. These actions are direct violations to Texas Administrative Code §202.75, which you agree to abide by when you use this platform. Violations of these policies will yield an immediate account suspension and will be reported to the proper St. Mary's University authorities.



 ST. MARY'S  
UNIVERSITY  
SCHOOL of SCIENCE,  
ENGINEERING  
AND TECHNOLOGY  
MACHINE LEARNING LAB

8. Please keep your username and password confidential and ensure that password (if changed) is of reasonable strength. Failure to do so is cause for immediate account suspension and/or termination.
9. Avoid "sharing" passwords or accounts by logging in as any other user including other students or your research advisor.
10. Ensure proof of license credentials is readily available prior to use of license-restricted software.
11. Notify the PI of email address changes as soon as possible. As email is the main source of contact in case the PI notices any issues with the servers while you are using the platform.
12. Assume basic privacy in use of the deep learning platform but note that information such as access logs and utilization statistics are routinely gathered by the PI and will be used for the grant progress reports.
13. Use the deep learning platform in a way that match the characteristics of the user's requirements. You should avoid unreasonably wasteful practices such as using the processing power in a non-research related activity or storing redundant copies of large data sets.
14. Refrain from attempting to gain unauthorized access to other users' data.
15. Do not intentionally or otherwise attempting to use unauthorized software.
16. Do not intentionally or otherwise using the platform to attempt to interfere or gain unauthorized access to other servers or other networked resources.
17. Refrain from using the deep learning platform for any unethical or illegal endeavors. Also, by using all users agree to avoid copying or using unauthorized copyrighted software on the servers. This means illegally transmitting, storing, copying or using any material in violation of any federal or Texas laws is explicitly prohibited.
18. Immediately report any security breaches or policy violations attempted to the PI by emailing him at [vemamian@stmarytx.edu](mailto:vemamian@stmarytx.edu) .